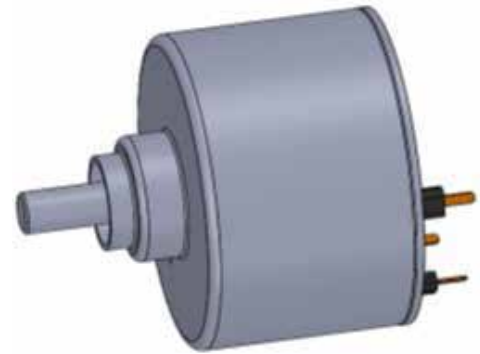


## Specifications

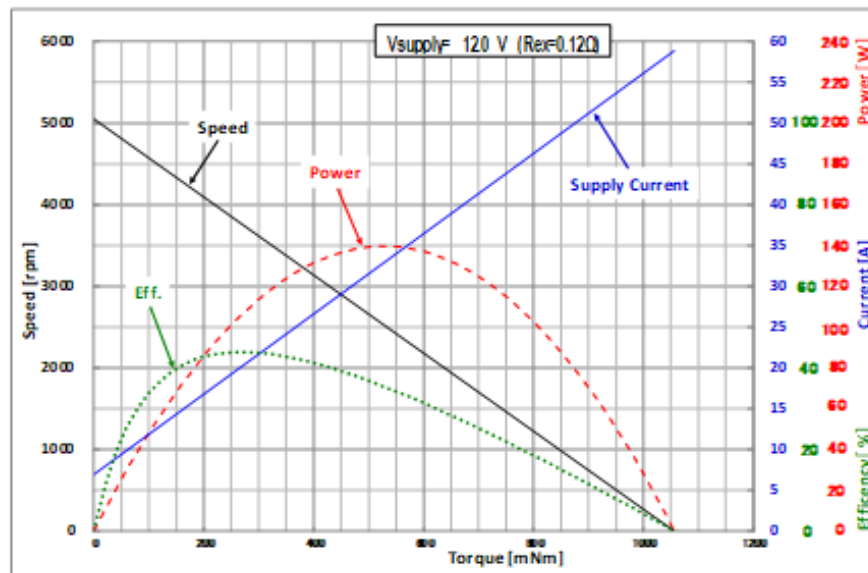
Motor type	3phase-10poles-12slots Inner rotor type brushless motor
Rated voltage	12 V
Rated load	170 mNm
Rated speed	3,650 rpm
Rated output	65 W (25 °C)
Operating temperature range	-40 ~ 125 °C (continuous) 150 °C (intermittent)

\* Some customization is available, with commutation sensors, connector installation, etc.



- UVW winding terminals
- Without commutation sensors

## Characteristics



## Outline

