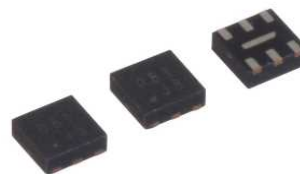


Temperature Switch IC with Enable

MM3588



Outline

This IC is a temperature switch IC that senses the ambient temperature of the IC and switches the IC output at the detected temperature (active high), and has the hysteresis function. Detection temperature (TDET) can be selected in 1.0°C steps between the range of 60 to 90°C with rank expansion, with detection temperature accuracy of ±2.0°C. This IC has an enable pin (CE) for output ON and OFF.

Applications

Wearable	Flat TV	PC Display
Smart Phone	Digital camera	
Tablet PC	Digital Video Camera	

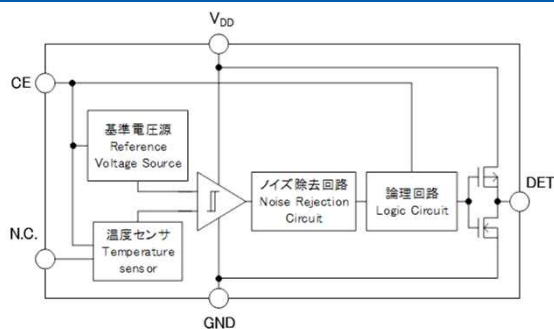
Features

- ① High Temperature accuracy ±2.0°C
- ② Low current consumption ... 1.5μA typ
- ③ Small Package... SSON-6J
- ④ With enable pin for output control ON and OFF (CE)
- ⑤ Hysteresis : (Active High)
 - MM3588A... 5°C
 - MM3588B... 10°C
 - MM3588C... 15°C

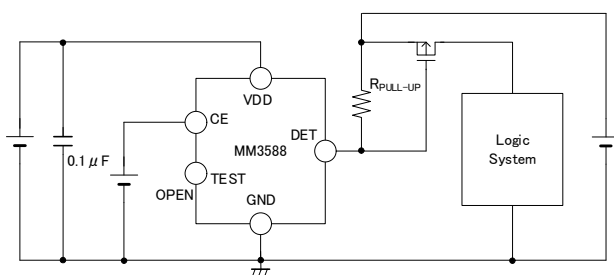
Specification

Item	Specification	Unit
Operation temperature	-30 ~ +125	°C
Operating voltage	1.6 ~ 5.0 (+60~+90°C)	V
Supply current	1.5 (typ.)	μA
Temperature accuracy	-2.0 to 2.0	°C
Hysteresis temperature	5.0 (T _{HYS} =5°C typ.)	°C
	10.0 (T _{HYS} =10°C typ.)	
	15.0 (T _{HYS} =15°C typ.)	
CE high threshold voltage	1.4 ~ V _{CC} +0.3	V
CE low threshold voltage	0 ~ 0.2	V
CE response time	200 max	μS

Block Diagram



Application circuit



Package

SSON-6J

