

For Home Appliances

Characteristic

With Plate With Cover With Antivibration rubber

- Development concept
 - Equal mounting structure low voltage motor to high voltage mould motor
- DC12 ~ 24V
- Rotation speed : 200 ~ 2,000min⁻¹
- Output : 30W



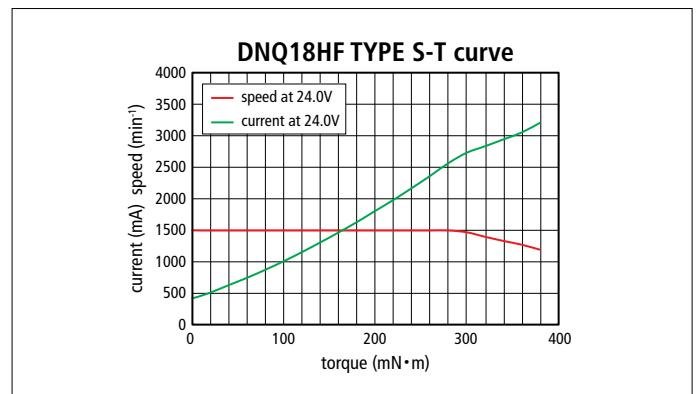
用途 Application

- Air purifier , Air conditioner , etc.

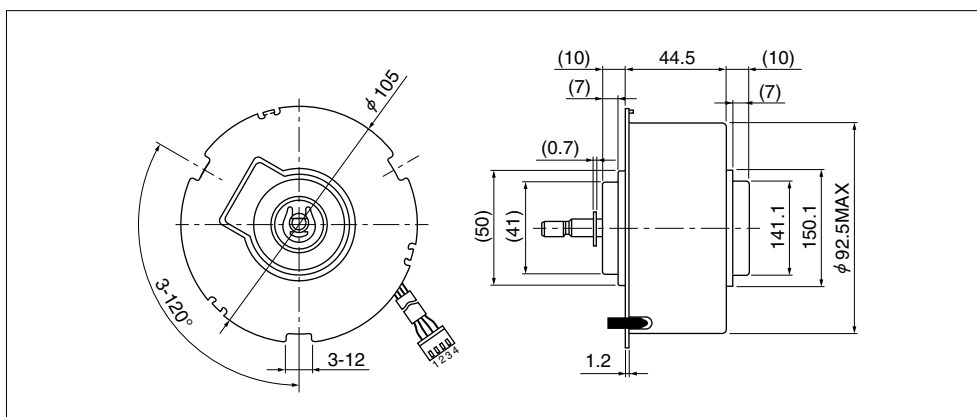
- Outline dimension Φ
92.5 (max Φ 105) \times 44.5

Major Characteristic Parameters

| Item | Min. | Nom. | Max. | Units |
|-------------------------|------|------|------|-------------------|
| Operating Voltage | 21.6 | 24 | 26.4 | VDC |
| Operating Speed | 200 | | 3000 | min ⁻¹ |
| Continuous Rating Power | | | 30 | W |
| Operating Temperature | 0 | 20 | 50 | °C |
| Operating Humidity | 15 | | 90 | %RH |
| Motor Weight | | | 700 | g |



Outside Dimension (Reference)



Please contact our sales for detail specification & order lot QTY. (All custom product by customer's requirement)