

# Minebea DIX24 GEARED MOTOR

**NEW**

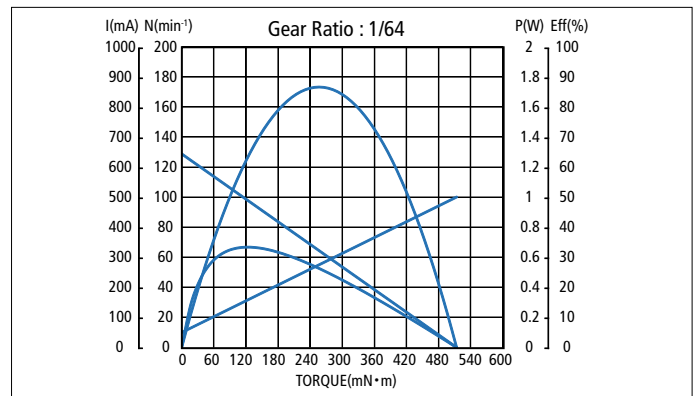
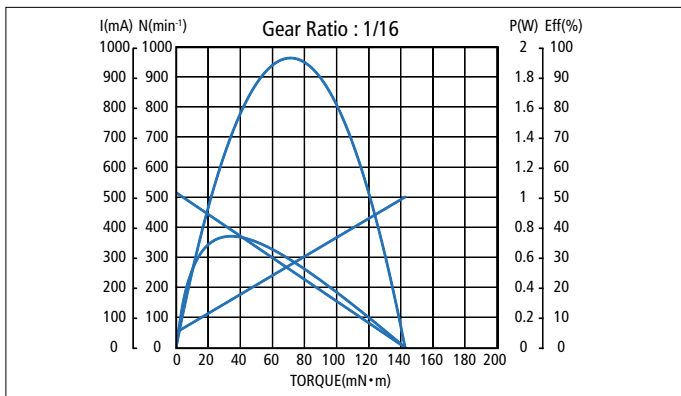


Ratio ※ 1	Gear Box			Total Length L1+motor (mm)	Rated Voltage (V)	No Load		Rated Load			Max Rated Load torque ※ 2 (mN·m)	Max Instant Torque ※ 3 (mN·m)	
	Type	Material	Step			Length L1 (mm)	Speed (min <sup>-1</sup> )	Current (mA)	Torque (mN·m)	Speed (min <sup>-1</sup> )			Current (mA)
1/4	Planetary	Metal	1	13.1	32.2	24	2063	50	11	1500	172	49.0	73.5
1/16	Planetary	Metal	2	16.2	35.3	24	516	50	39	375	172	73.5	110.3
1/24	Planetary	Metal	2	16.2	35.3	24	344	50	58	250	172	73.5	110.3
1/64	Planetary	Metal	3	19.3	38.4	24	129	50	70	111	110	98.0	147.0
1/96	Planetary	Metal	3	19.3	38.4	24	86	50	98	75	110	98.0	147.0

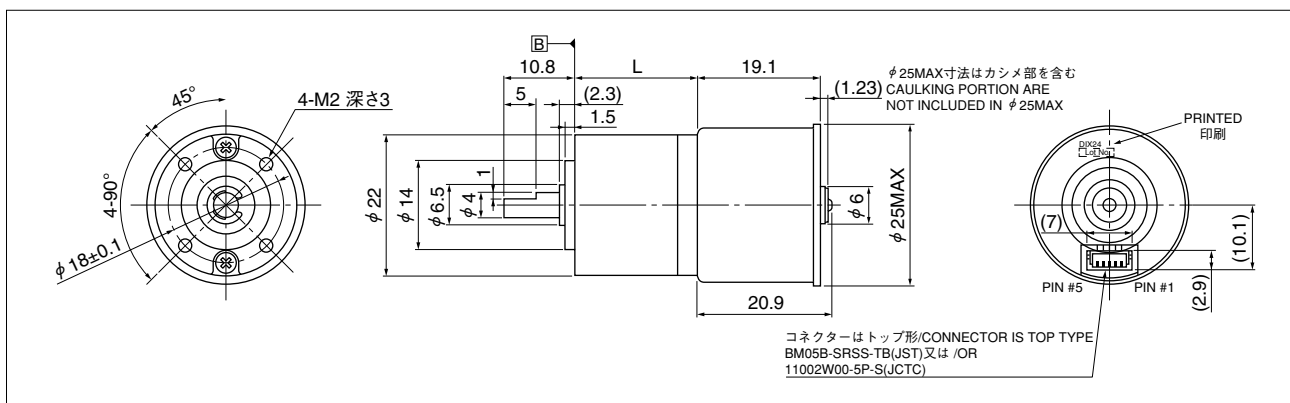
※ 1 : This is a typical example. Other gear ratios are also available.

※ 2, ※ 3 : The notation is the value of the standard type. The torque exceeding the notation can be copied by changing gear material or gear thickness.

## Major Characteristic Parameters



## Outside Dimension (Reference)



Please contact our sales for detail specification & order lot QTY. (All custom product by customer's requirement)